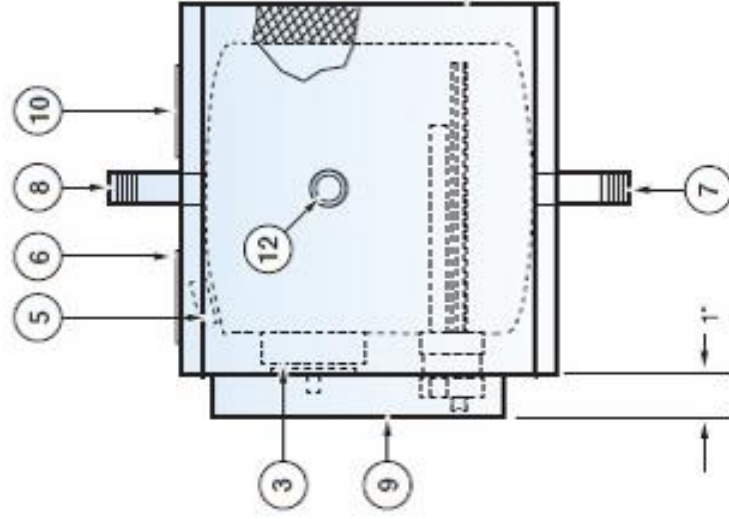
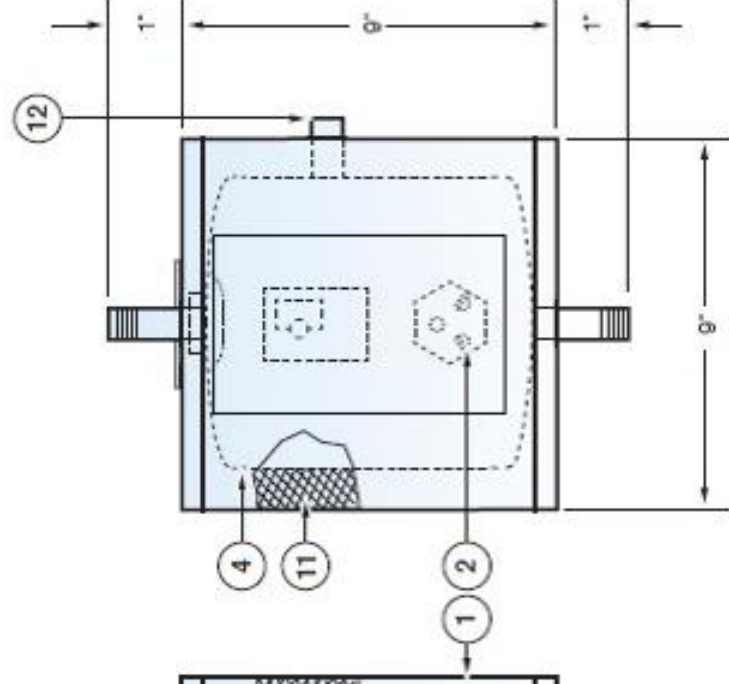


PC Number	Description	PC Number	Description
1	Jacket Green Enamel	7	Cold Water Inlet - 1/4" Male NPT
2	Heating Element - 1000 Watts, 120V	8	Hot Water Inlet - 1/4" Male NPT
3	Thermostat 110-170°F	9	Front Cover
4	Stainless Steel Tank - 1 Gallon	10	Electrical Service Entrance
5	Hi Limit Manual Reset - 190°F	11	Insulation Fiberglass 1" Thick
6	Access Plate To Hi-Limit	12	T&P Relief Valve Opening

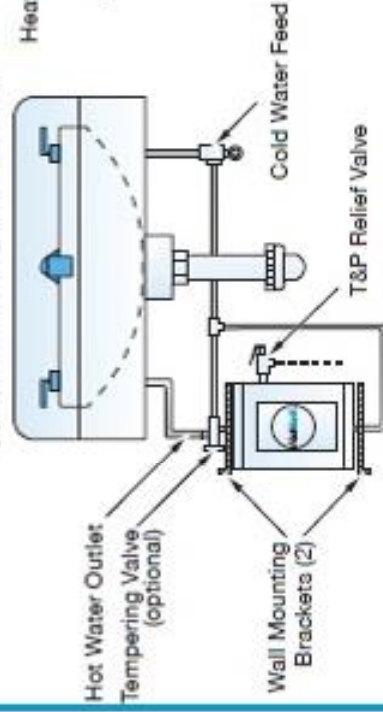


Side View



Front View

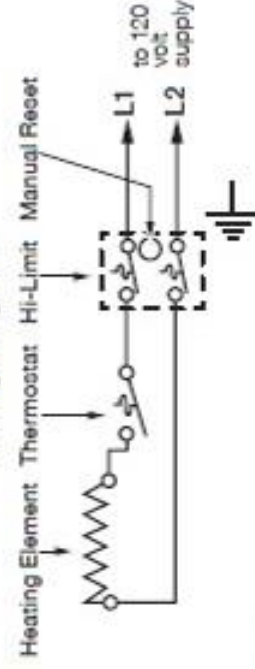
Typical Lavatory Installation



Optional Equipment:

- Tempering valve to increase the supply of hot water to 11.5 GPH 45-110°F
- 450 watt model, please specify model CE110-450W rated 4 amp at 120V
- Factory supplied 3 foot long grounded power cord

Wiring Diagram



Notes:

1. Unit rated for 150 psi WP
2. Recovery rated 6.3 GPH 45-110°F and will draw 8.3 amps at 120V, 1 PH
3. Unit supplied with two (2) wall mounting brackets
4. Unit supplied with T&P relief valve set at 160 psi and 210°F

Hubbell, Electric Water Heater

Model CE110

1 Gallon ■ 1000 Watt ■ 120 Volt ■ 1 Phase

The Electric Heater Company ■ Stratford, CT

By R.P.

Drawing Number 208

Hubbell